

PF7

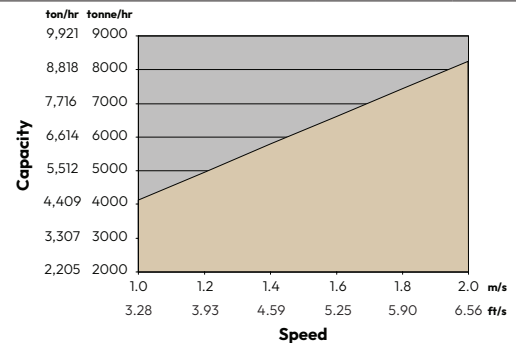
Face Conveyor Line Pan



TECHNICAL DATA

	Units	
Line Pan Width	1542 mm	60.71 in
Flight Bar Width	1388 mm	54.65 in
Deck Plate Thickness	30 + 25 mm	1.18 + 0.98 in
Profile Height	350 mm	13.78 in
Bottom Plate Thickness	30 mm	1.18 in
Dogbone Breaking Strength	4500 kN	505.82 tonf
Dogbone Housing FoS	1.5 times	
Shear Strength	> 6000 kN	> 674.43 tonf
Vertical Articulation	up to $\pm 6^\circ$	
Horizontal Articulation	0.8°-1.2°	
Chain Strands	DKB 60×135/181	
Conveying Capacity approximate	1.15 m ²	12.38 ft ²

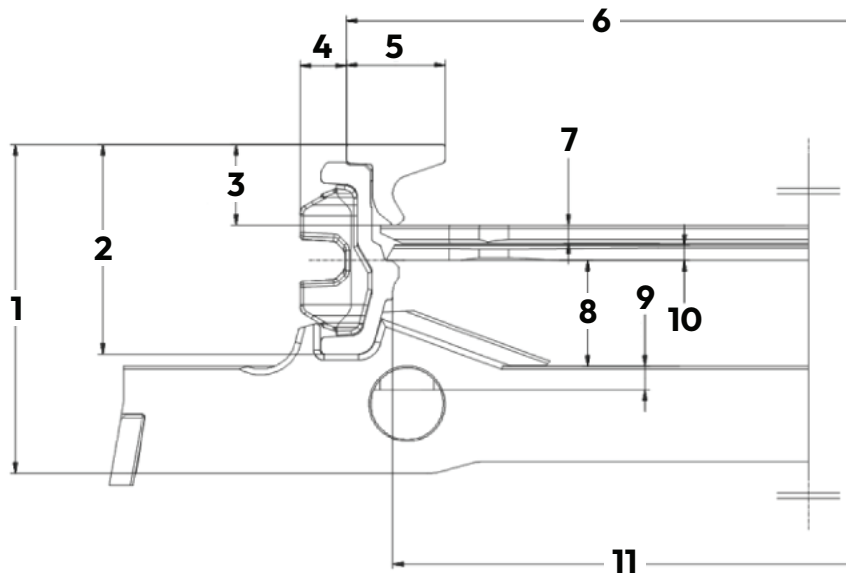
PF7/1542



PF7 Face Conveyor Line Pan

Dimensions

All dimensions are approximate.



PF7/1542		
1	550 mm	21.6 in
2	350 mm	13.78 in
3	134 mm	5.27 in
4	77 mm	3.03 in
5	164 mm	6.46 in
6	1542 mm	60.71 in
7	30 mm	1.18 in
8	177 mm	6.97 in
9	40 mm	1.57 in
10	25 mm	0.98 in
11	1388 mm	54.65 in