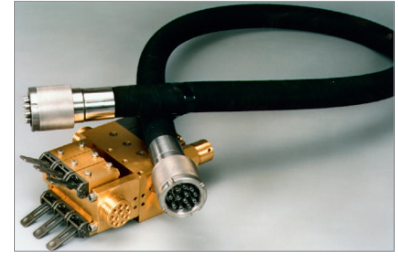


MULTIMATIK

Neighboring Control



GENERAL APPLICATION

The HBT MULTIMATIK neighbor control has been specially developed for longwall mining applications. Two functions per valve can be controlled separately, e.g. extension and retraction of double-acting water-hydraulic legs and cylinders. It can be used to perform a choice of 8-20 hydraulic functions, and special customer requirements can be considered in special designs.

MAIN COMPONENTS

The MULTIMATIK neighbor control consists of three main groups:

PILOT CONTROL

Control block, equipped with manual 4/3-way valves (DN4)

MULTI HOSE

Multiple hose line for transferring the hydraulic fluid to the main control block

MAIN CONTROL

Control block equipped with 4/3-way valves (DN10 / DN12) to the end user.

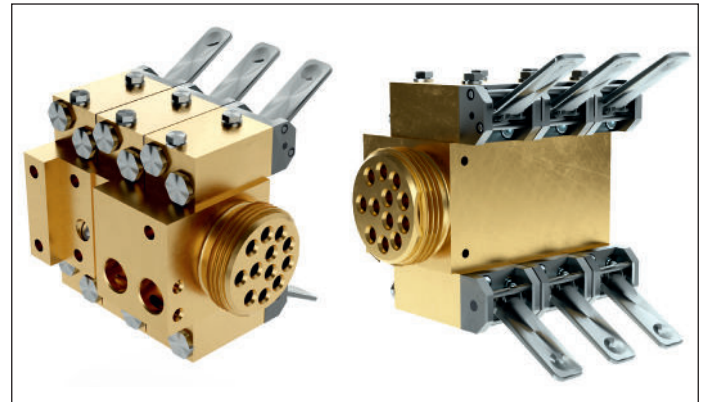
Pilot and main control can be installed as a unit or separately.

Connections

The pressure supply, as well as the connection of the return flow of the main control blocks is made via a so-called P+R connection. This P+R connection is the same for main control blocks, whether pilot or pilot-direct, 8 - 12 - 16 - or 20 functions, and is flanged to the corresponding block. In the P+R connection there is a check valve in the R connection and a coarse dirt filter in the P connection. A valve is also installed to prevent the return pressure from exceeding the supply pressure.

MAIN FEATURES

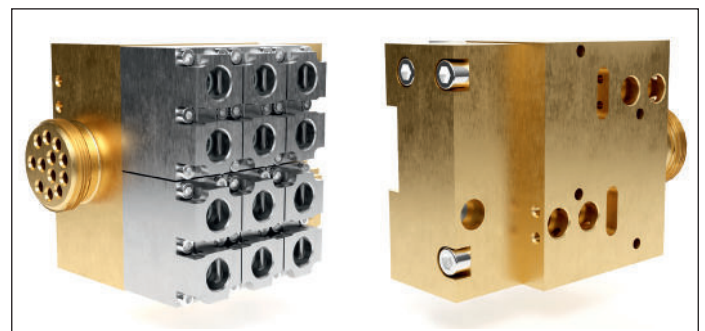
- High reliability
- High robustness
- Compact design
- Customization on request



Pilot Control



Multi Hose

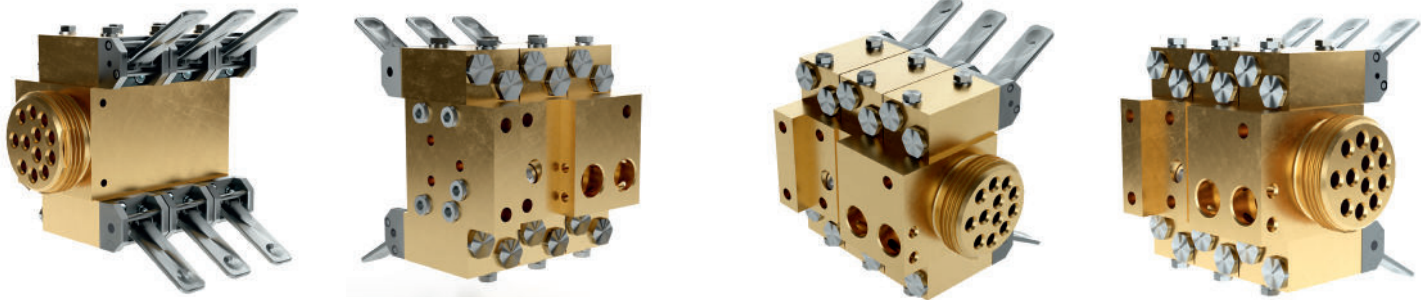


Main Control

MULTIMATIK Neighboring Control

TECHNICAL SPECIFICATIONS

PILOT CONTROL



GENERAL APPLICATION

The MULTIMATIK pilot control for the neighboring control is equipped with manual 4/3-way valves and is used to control the functions on the main block in the neighboring shield. It can be installed individually or with a main control block.

TECHNICAL DATA

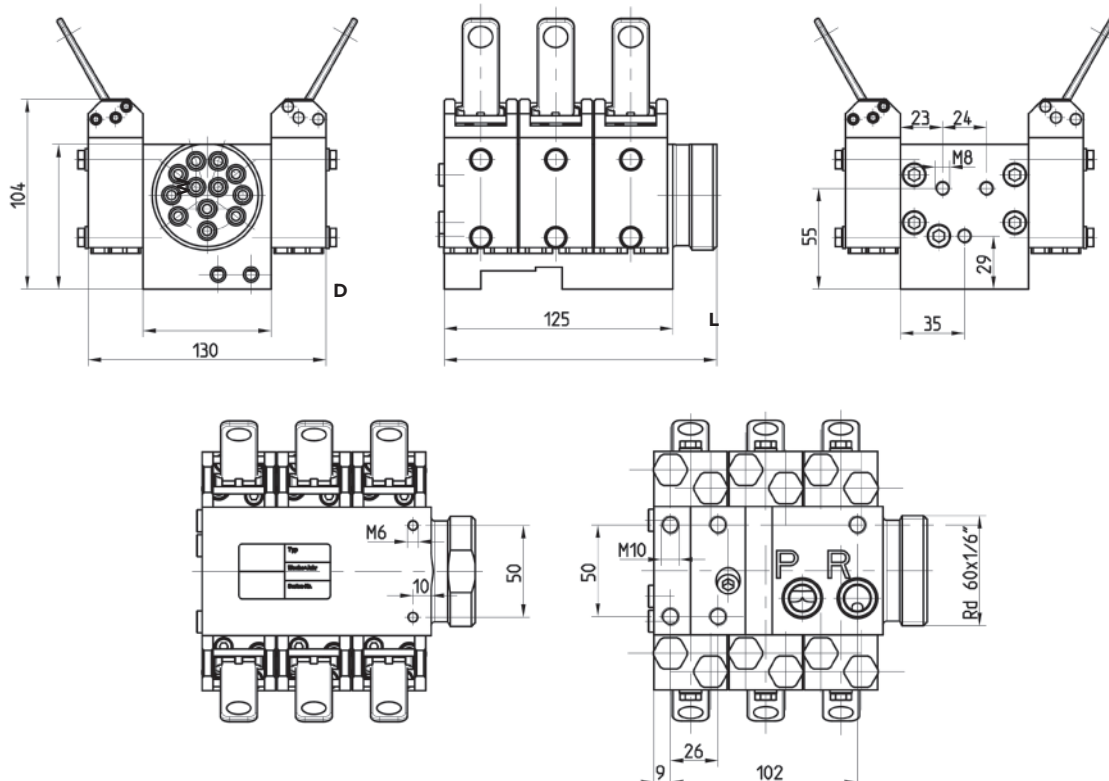
- > **Nominal pressure:** 420 bar
- > **Material:** stainless materials

DIMENSIONS

Number of functions	Length (L) [mm]	Width (W) [mm]	Depth (D) [mm]	Weight [kg]	HBT Order No.
8	109	79	70	4,0	4968772
12	149	79	70	5,0	741094
16	190	90	80	10,0	738361
20	240	90	80	12,0	4968773

DIMENSIONS

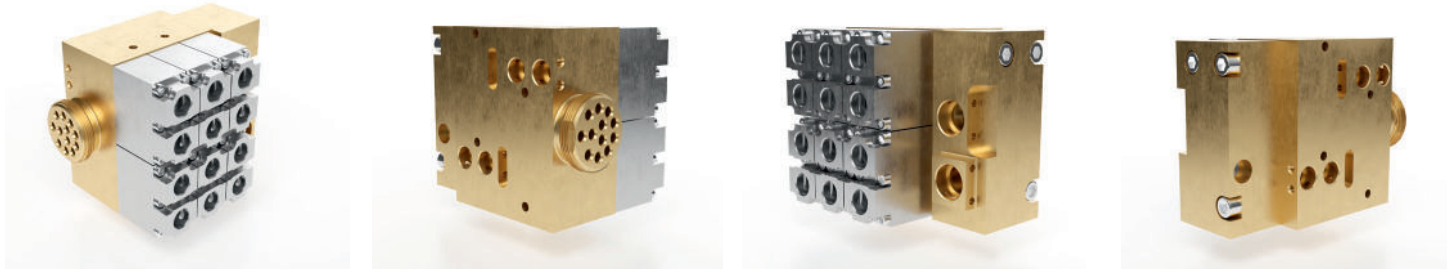
Pilot Control with 12 functions



MULTIMATIK Neighboring Control

TECHNICAL SPECIFICATIONS

MAIN CONTROL



GENERAL APPLICATION

The MULTIMATIK main control unit for the neighboring control unit is equipped with 4/3-way valves (DN10 / DN12). These are actuated by the control signals coming from the pilot control. Alternatively, deflector plates can be used to route the control signal directly to the consumer.

TECHNICAL DATA

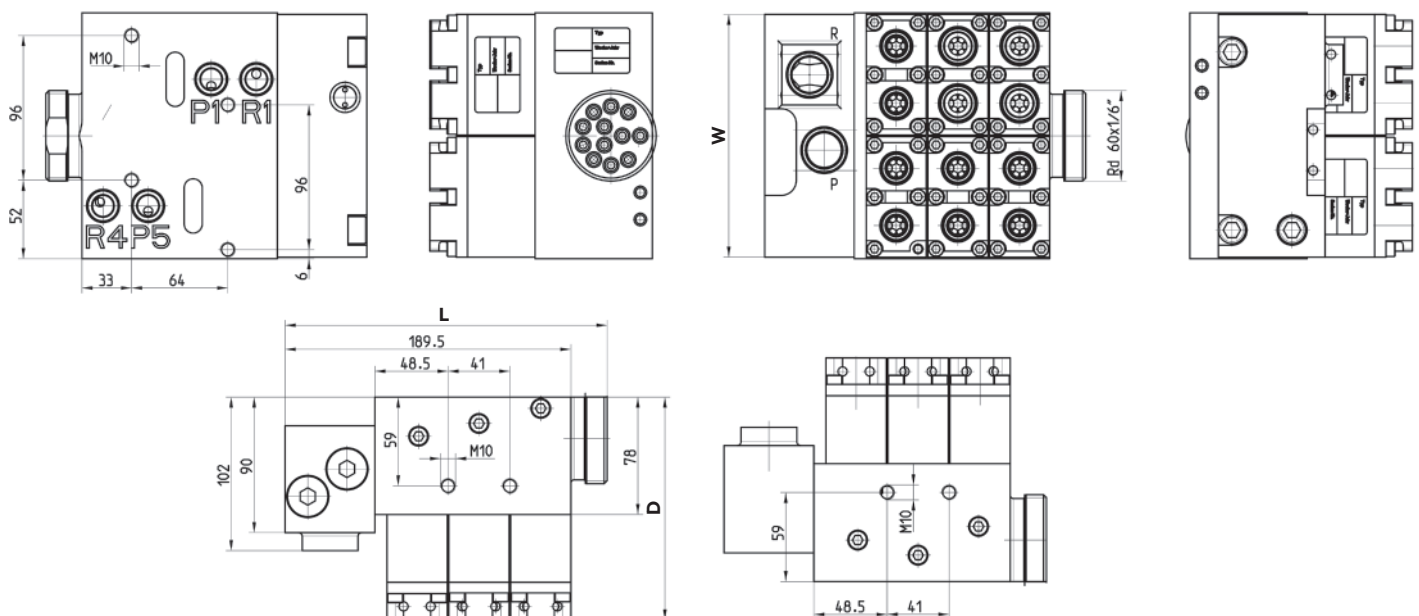
- > **Nominal pressure:** 420 bar
- > **Material:** stainless materials

DIMENSIONS

Number of functions	Length (L) [mm]	Width (W) [mm]	Depth (D) [mm]	Weight [kg]	HBT Order No.
8	172,5	163	169	11	4968774
12	213,5	163	179	16,6	741095
16	254,5	163	188	23,3	4968775
20	295,5	163	189	28	4968776

DIMENSIONS

Main Control with 12 functions



MULTIMATIK Neighboring Control

TECHNICAL SPECIFICATIONS

MULTI HOSE



GENERAL APPLICATION

The multi-hose is a multiple hydraulic hose. Several (8-20) individual hose lines are combined in a bundle. A protective hose protects the individual hoses against external damage.

TECHNICAL DATA

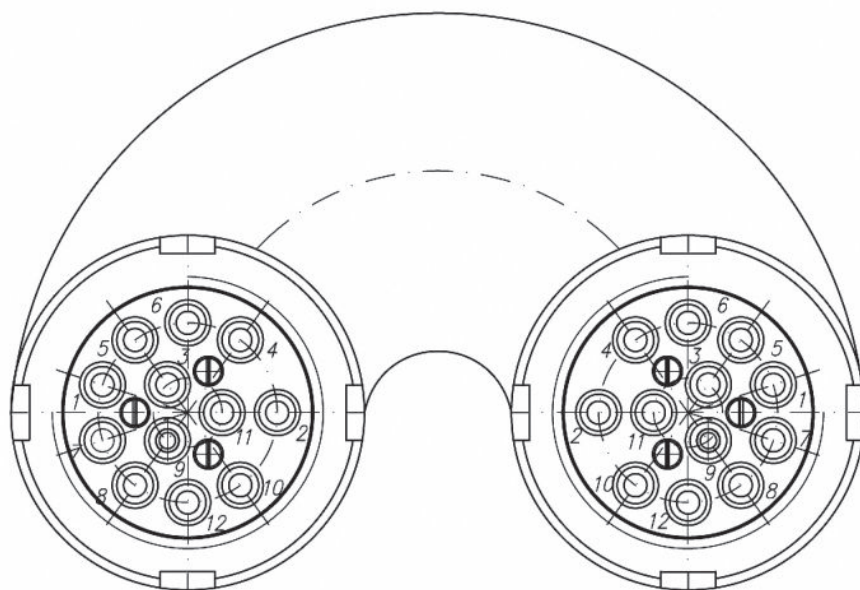
> **Nominal pressure:** 420 bar

DIMENSIONS

Number of Functions	Length [mm]	Nominal Diameter	Order No.
8	3500	DN4	746313
12	2400	DN4	746312
12	3400	DN4	961038
16	2500	DN4	961040
16	3400	DN4	746311
20	2500	DN4	496877
20	2900	DN4	747770
20	3400	DN4	4968778

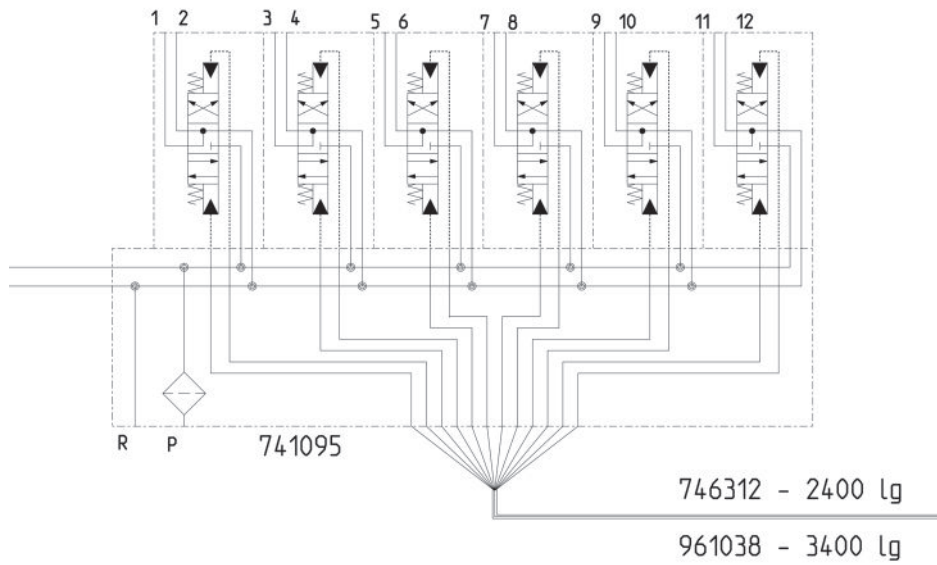
Other lengths available on request

INTERFACE



CIRCUIT DIAGRAMS

Pilot Control



Main Control

